

# WVU 101

## School of Social Work Introduction Packet



## Welcome to West Virginia University, WV's land-grant Institution

By Hunter Tenney

Welcome to WVU School of Social Work! Know that we are glad to have you here, and we welcome you as part of our Mountaineer family. Accredited since 1942, the WVU School of Social Work has a long history of excellence. You are in good hands. As a transfer student who transferred here the start of my junior year with little knowledge of life at WVU, I know that the process can be challenging, and frankly scary. How to navigate campus, where to live, where to eat, what was Morgantown like, who are people I can trust, and how to make the most of my time here were all questions that weighed on my mind. It is my hope that in the next several pages, I can provide you with the knowledge I wish I had while adjusting to WVU. WVU is a great place to learn and grow. The faculty here are amazing, caring, and passionate. Some of my favorite restaurants and businesses are in Morgantown. It has become home for me, as it will for you. Welcome home Mountaineer family.

## Table of Contents

- 1** [Welcome & Table of Contents](#)
- 2** [A Letter From Our Leadership](#)
- 3** [Getting Around Campus](#)
- 4** [Getting Around Campus](#)
- 5** [Numbers to Know at WVU](#)
- 6** [Numbers to Know: School of Social Work](#)
- 7** [The Morgantown Area](#)
- 8** [Where's Knapp?](#)
- 9** [The Morgantown Area](#)
- 10** [Where's Knapp?](#)
- 11** [Where's Knapp?](#)
- 12** [Where's Knapp?](#)
- 13** [Accounts to Follow](#)

# A Letter from our Leadership



On behalf of the School of Social Work, welcome to WVU and to Morgantown. We are delighted that you are a member of our School of Social Work community of learners. The BSW major will prepare you for generalist social work practice in a variety of settings where you can make a positive difference in the lives of people.

We are committed to your education so that you, in turn, can be committed to professional practice with individuals, families, groups, organizations, and communities. The School of Social Work is also committed to affirming diversity and promoting social justice in all areas of practice. Additionally, we abide by a professional code of ethics which guides our principles and standards of practice.

The School of Social Work offers the BSW degree at the undergraduate level and the MSW degree and PhD degree at the graduate level. Students who complete the BSW degree are eligible to apply for advanced standing status in the MSW program. Advanced standing allows you to complete the MSW degree in just twelve months (rather than the traditional two years). Thus, you can earn your BSW degree in the four years and then the MSW degree in just one additional year.

You are entering the social work profession at an important time. There is a critical shortage of professional social workers in West Virginia and throughout the United States. The job market for social work graduates is robust and your work will be vital to the well-being of the clientele you will serve. Professional social workers, indeed, make a difference in the lives of others. So, welcome aboard. We're glad you're here! Let's go.

Dr. Deana F. Morrow, PhD, LICSW, ACSW  
Director and Professor  
WVU School of Social Work

# A Letter from our Leadership



Dear student,

I am excited to personally welcome you to West Virginia University, to the Morgantown area, and to our School of Social Work. New students are the lifeblood of our BSW program, so take in the honor that is bestowed upon you! Whether you are a transfer student from out of state, or a local “townie” student who knows the in’s and out’s of the area, or a West Virginian coming from another part of the state, I know you will find this guide to be useful.

Social work is a unique profession because of its strong commitment to values and ethics, its rootedness in social justice and a commitment to end oppression and marginalization, and its interdisciplinary, systems-based framework. So many students who find social work say, “I’m so glad I found social work – it’s the perfect fit for me!” or “I wish I had found social work sooner – it just fits with the way I think.” I hope you will find that social work is a good fit for you. Your faculty in the School of Social Work are ready to teach you and provide professional mentorship and guidance throughout your time in our program, and beyond as an alumnus.

Your academic advising is always done right here in the School of Social Work – you won’t get a more tailored experience anywhere else! We pride ourselves in helping students along every step of the way towards their degree completion. Whether you need a resource for a personal issue you’re facing, want to talk through the pro’s and con’s of a minor, or anything else, please reach out to your advisor! We are here to help!

All the best as you move forward,

Let’s Go!

Dr. Megan Gandy, PhD, LCSW  
BSW Program Director and Professor  
WVU School of Social Work



## Getting Around Campus: And What's with the Yellow Cars?

You will notice a seemingly endless stream of yellow cars shuttling students around on either campus, that is our PRT system! The PRT is the primary way students get between campuses, like from Evansdale to Downtown. All you need to ride the PRT is your student ID and knowing where the PRT terminals are. There are 5 terminals in total, scan the QR code below to find the ones closest to you. Since the PRT does not run 24/7, it's helpful to know the schedule.

- Monday through Friday: 6:30am-10:15pm
- Saturday: 9:30am-5pm
- Sunday: Closed

Another popular travel option is the Mountain Line Bus system. These are distinguished by the light green you see in the picture to the right. While they bus people all over Morgantown and the surrounding area, the best one for getting around campus is Route 38: Blue and Gold, which stops by each campus in a 20-minute loop.

To know where the bus you are looking to get on is, download the app by following the QR code below for your respective system: Apple or Android.

If you live off-campus, many landlords will have a personal shuttle for their tenants, or the Mountain Line will stop nearby. It is always a good idea to check with your landlord about travel options. If you need to get around in a pinch, you can also call an Uber or utilize Motown Taxi. Aside from that, you will find students either biking or walking around much of campus.

If driving your own car is more your style, pay attention to where you park. Parking in a restricted lot could get you fined, or even towed, if you are going downtown, you can park at the Coliseum lot for a \$1 a day. The engineering PRT and bus pickups are both near the Coliseum towards campus. You can also park in metered places found inside the Mountainlair and on side streets, though these tend to be more expensive.



PRT Terminal Locations



Mountain Line App: Apple



Mountain Line App: Android



## Numbers to Know at WVU

### Academic & Student Life

#### Mountaineer Hub: 304-293-1988

Mountaineer Hub is your one stop shop for all things Financial Aid, Scholarship information, Student Accounts, Federal work-study questions, and student employment. They are located on Evansdale at 62 Morrill Way, Morgantown WV, 26506 (2nd floor of building).

#### Career Services: 304-293-2221

Career Services is here to support your professional growth. From resume help, job interviewing practice, connecting you with potential employers, cover letter drafting, and examining job offers, Career Services can help you make the most of your time here at WVU. They are located on the left side of the 1st floor of the Lair, at 133 Mountainlair Building, Morgantown WV, 26506.

#### Eberly Writing Studio: <https://wvu.campus.eab.com>

Located on the ground floor of Colson Hall, the Writing Studio will help you draft, write, and revise writing assignments you bring to them. Got a presentation? The Writing Studio will also help you prepare for the presentation!

#### Math Learning Center: 304-293-2011

The Math Learning Center hosts drop-in tutoring for Math 100 and 200 level courses in-person Monday through Friday, and online Sunday through Thursday. They are located at Colson Hall, Room 301. To check times and tutor profiles click [here](#).

#### Chemistry Learning Center: 304-293-3435

The Chemistry Learning Center hosts drop-in tutoring for Chemistry 100 level courses, Monday through Wednesday, 6-8pm. You can find them at the Chemistry Research Laboratories (CRL) 157.

#### Student Success: 304-293-5804

The Office for Student Success provides academic and peer support through one-on-one meetings with success coaches, drop-in and appointment-based tutoring on a range of subjects, student workshops, and mentoring! You can also schedule an appointment with a success coach [online](#).

#### WVU Libraries: 1-304-293-4040

Located on both Evansdale and Downtown campuses, the WVU libraries provide a great place to study with many quiet spaces and personal study rooms available for reservation. With Eberly's own dedicated librarian, they can help you find research for your papers, and print papers as well as posters. The library system is also a community, with workshops throughout the year students can participate in! You can find the downtown library a little way down from the Mountainlair.

WVU Engage: <https://wvuengage.wvu.edu/>

WVU Engage is the perfect place to get involved in student organizations! Whether you are wanting to join an organization, or just wanting to get out and meet other students while doing something fun, Engage is a great place to look! With 472 organizations, there is something for everyone!

Education Abroad: 304-293-6955

Wanting to study abroad? Not sure where to start? WVU offers a range of study abroad programs throughout the school year ranging from a week to 8 weeks over the summer semester!

Student Life: <https://studentlife.wvu.edu/home>

Student Life is composed of 20 organizations whose purpose is to make your experience as fulfilling and fun as possible, while supporting you each step of the way! Check out the website for access to their calendar of events and see how you can get involved! From Adventure WV, the student recreation centers, iServe, and ResLife, there is TONS of activities happening!

Center for Black Culture & Research: 304-293-7029

The Center for Black Culture and Research serves as a source of social, cultural, and education support for African and African American students. Hosting events throughout the semester, they encourage everyone to show up and grow, learn, and share their experiences with others.

Commuter Assistance: 304-293-5611

The Commuter Assistance Program offers social events, academic counseling, and a quiet place to relax and study on the Downtown and Health Sciences campuses. Downtown, they are located in G-11 of Elizabeth Moore Hall, across the street from the Mountainlair.

Rohr Chabad Jewish Center: 304-599-1515

Located at 221 Willey Street, Rohr Chabad foster a positive environment for students and community members to gather in the spirit of exploring and celebrating Jewish tradition and identity.

Islam Center: 304-506-6160

Founded by Imam Vajid Pathan to serve as a beacon of hope and resource center for American Muslims, the Islam Center welcomes students and community members alike to explore and learn with them at 434 Harding Avenue.

## Health & Safety

Carruth Center: 304-293-4431

As a student you have access to the Carruth Center, which provides a variety of short-term counseling, psychological and outreach services. You can call to schedule an appointment or visit their website at <https://carruth.wvu.edu/services>.

Student Health: 304-285-7200

Student Health offers a variety of wellness services including check-ups, vaccinations, X-rays, lab services, referrals and more. Located near Carruth, it is a short walk from the Towers PRT Station.

Campus Police: 304-293-3136

If you are in immediate danger, please call 911 first. Please consider downloading the LiveSafe App by following the QR code below. Using this app, you can text, send pictures, and talk to university police in real-time. Additionally, your friends can track your location while you walk home with this app.

WVU Care Team: 304-293-5611

Worried about a friend or classmate falling behind due to their mental health? Worried about a change in behavior? Make a referral to the CARE Team so they can reach out in a supportive fashion to care for the student.

LGBTQ Center: 304-293-9593

Situated in Maple House, the LGBTQ Center provides a safe, welcoming space for students to relax and study. They host events throughout the semester, subscribe to their mailing list at <https://lgbtq.wvu.edu/events>.

Women's Resource Center: [wrc@mail.wvu.edu](mailto:wrc@mail.wvu.edu)

Located in Arnold Hall, WRC provides several initiatives for students including access to free sexual health resources (condoms, dental dams, pads, and more). Additionally, they host events and resources throughout the semester including the Silent Witness Exhibit.

Collegiate Recovery: 304-293-2547

Located at cozy Serenity Place, Collegiate Recovery provides programmatic support and events to support those in recovery, those who love someone in recovery, and anyone interested in joining a healing community. You can check out their weekly programming at <https://recovery.wvu.edu/programming>.

Country Roads Peer Mentor: 304-293-2914

Country Roads supports students with intellectual/physical disabilities. They welcome volunteers to serve as peer mentors in a variety of fashions. Call the number above or visit [IServe](#) to see if there is an opening!

Office of Accessibility Services: 304-293-6700

The Office of Accessibility Services provides support for students through academic, housing, and transportation accommodations.

Center for Resilient Communities: 304-293-5603

The CRC is a learning community focused on action research and community transformation. They explore aspects of food justice, environmental justice, and community economies.

Legal Services: 304-293-4897

Legal Services provides legal support to students in matters such as leases, contracts, tenant issues, notary services, insurance matters, debt collection, employment grievances, and more.

The Rack: 304-293-0385

The Rack is a student food pantry located on both downtown and Evansdale campus. Offering a selection of boxed goods and fresh produce weekly free of charge, it goes a long way in reducing food insecurity on campus.



WVU Hub Appointment



Live Safe App



Carruth Appointment

# Numbers to Know: School of Social work



Bekah Dunaway, MSW/MPA, LGSW  
BSW Recruitment and Advising  
Coordinator, Clinical Instructor  
304-293-6374  
rjdunaway@mail.wvu.edu



Deana F. Morrow, Ph.D., LICSW, ACSW  
Director and Professor  
304-293-3501  
deana.morrow@mail.wvu.edu



Megan Gandy, MSW, Ph.D., LCSW  
BSW Program Director and  
Associate Professor  
304-293-4482  
megan.gandy@mail.wvu.edu



Lindsey Rinehart, MSW  
Field Education Director and Clinical  
Instructor  
304-293-7339  
lindsey.rinehart@mail.wvu.edu



Hunter Tenney, BSW  
Admissions & Recruitment Graduate  
Assistant, MSW/MPA Student  
304-293-5782  
dalton.tenney@mail.wvu.edu



Tina Faber, MSW  
Field Placement Specialist and  
Clinical Instructor  
304-293-4898  
tfaber@mail.wvu.edu



SCHOOL OF SOCIAL WORK

Main Line: 304-293-3501

Email: Socialwork@mail.wvu.edu





## The Morgantown Area Housing

### On-Campus

Available to all undergraduate students, University dorms offer a range of locations and housing options from the Downtown, Evansdale, and Sunnyside locations. For those interested in community life, WVU offers many living-learning communities where you can live with people who share common interests. From communities based on major, health, LGBTQ-communities, and substance free ones, there are many options to pick from.

Scan the QR code below to learn more about these living-learning communities.



### University-Owned Apartments

Available after your first year, University apartments are the meeting grounds between independent living and University connection. With a range of options on the Downtown and Evansdale campus, you can select between 1, 2, 3, and 4 bedroom options.

Scan the QR code below to learn more about University apartment offerings.



### Off-Campus

Rather than provide a list of the 50+ landlords near here, I find it more helpful to summarize what I have learned. There are many apartments, and you are likely to hear good and bad both about them all. What works for some may not work for others, and that's okay! Some pointers.

- 1) Tour the units before leasing. Ask questions!
- 2) Take your lease to Legal Services before you sign.
- 3) Attend the Housing Fairs offered by Campus and Community Life.

Scan the QR code below to pull up a list of apartments and their contact information.





## The Morgantown Area Restaurants

### Hunter's Picks

[Terra Café](#)  
 The Grind  
 Blue Moose Cafe  
 Kegler's  
 Morgantown Brewing Company  
[Ogawa](#)  
 Green Tea Asian Fusion  
 Los Mariachis  
 HomeGrown Pizza  
 Panera Bread  
 Insomnia Cookies

### Pubs and Comfort Food

[Mountain State Brewing Company](#)  
 Almost Heaven Bar & Grill  
 Von Blaze  
 Boston Beanery  
[Zeke's Breakfast and Bakes](#)  
 Pies & Pints  
 Casa D'Amici  
 Five Guys  
 Gibbie's Pub & Eatery  
 Chestnut Brew Works  
 The Silver Spur Saloon  
 Scorer's  
 Primanti Brother's  
 Dirty Bird  
 Mario's Fishbowl  
 Benji's Sunnyside  
 The Canteen



### Cultural

[Oliverio's on the Wharf](#)  
 Chaang Thai Restaurant  
 Yama Japanese Restaurant  
 Volcano Japanese Restaurant  
 Lavender Cafe  
 Fresh Mint Indian Grill  
 Taj Mahal Indian Cuisine  
[Bombay Indian Grill](#)  
 Wings Ole'  
 Rio Verde  
[Great Wall Restaurant](#)  
 Istanbul  
 New Foo Sheen

### Mindful Eating

[Iron Horse Tavern](#)  
 TK's Produce  
[Bubble Fish](#)  
 River Birch Café  
 The Tea Shoppe at Seneca Center  
 Table 9  
 Ta'Khrai Thai Cafe  
 Flour and Feed  
 Get Fit Juices and Shakes



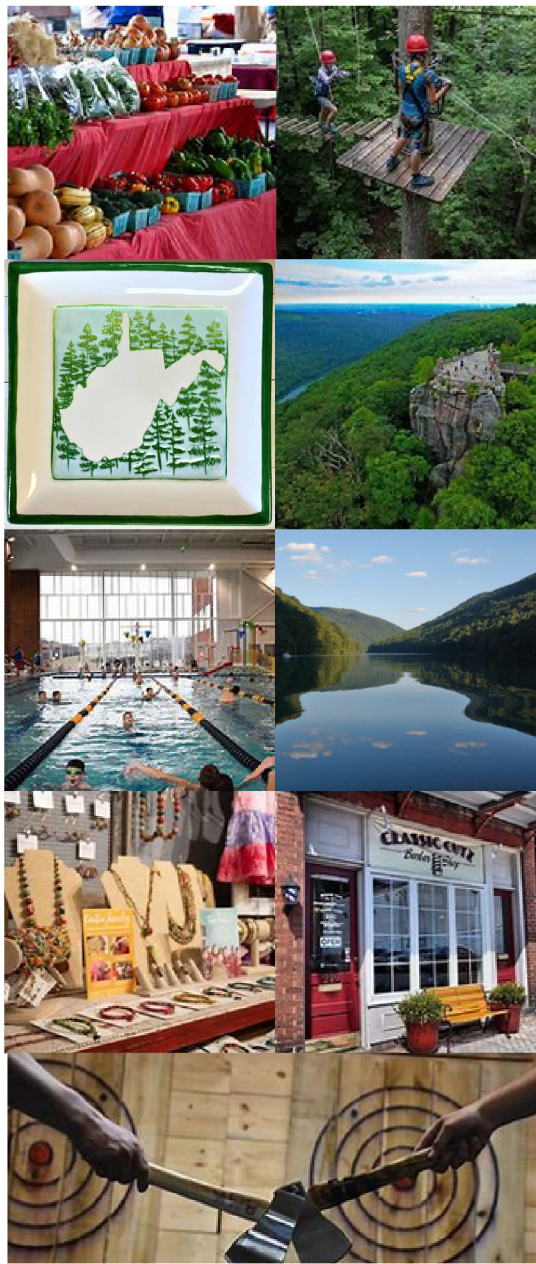
## The Morgantown Area Community

### Local Attractions

[Farmer's Market](#)  
 Xscape: Escape Rooms  
 Art Bar  
[WOW Factory](#)  
 123 Pleasant Street  
 The Metropolitan Theatre  
 Morgantown Art Museum  
 Morgantown History Museum  
 Suburban Lanes  
[Mylan Park Swimming](#)  
 Marilla Skate Park  
 WVU Recreation Center  
 (Downtown and Evansdale)

### Shopping

Morgantown Mall  
 University Town Center Plaza  
 Suncrest Town Center Plaza  
 Appalachian Gallery  
 Hoot and Howl  
 Gallery 304  
[River Fair Trade](#)  
 Silver Pennies Jewelry Design  
 The Plant Cult



### Outdoor Recreation

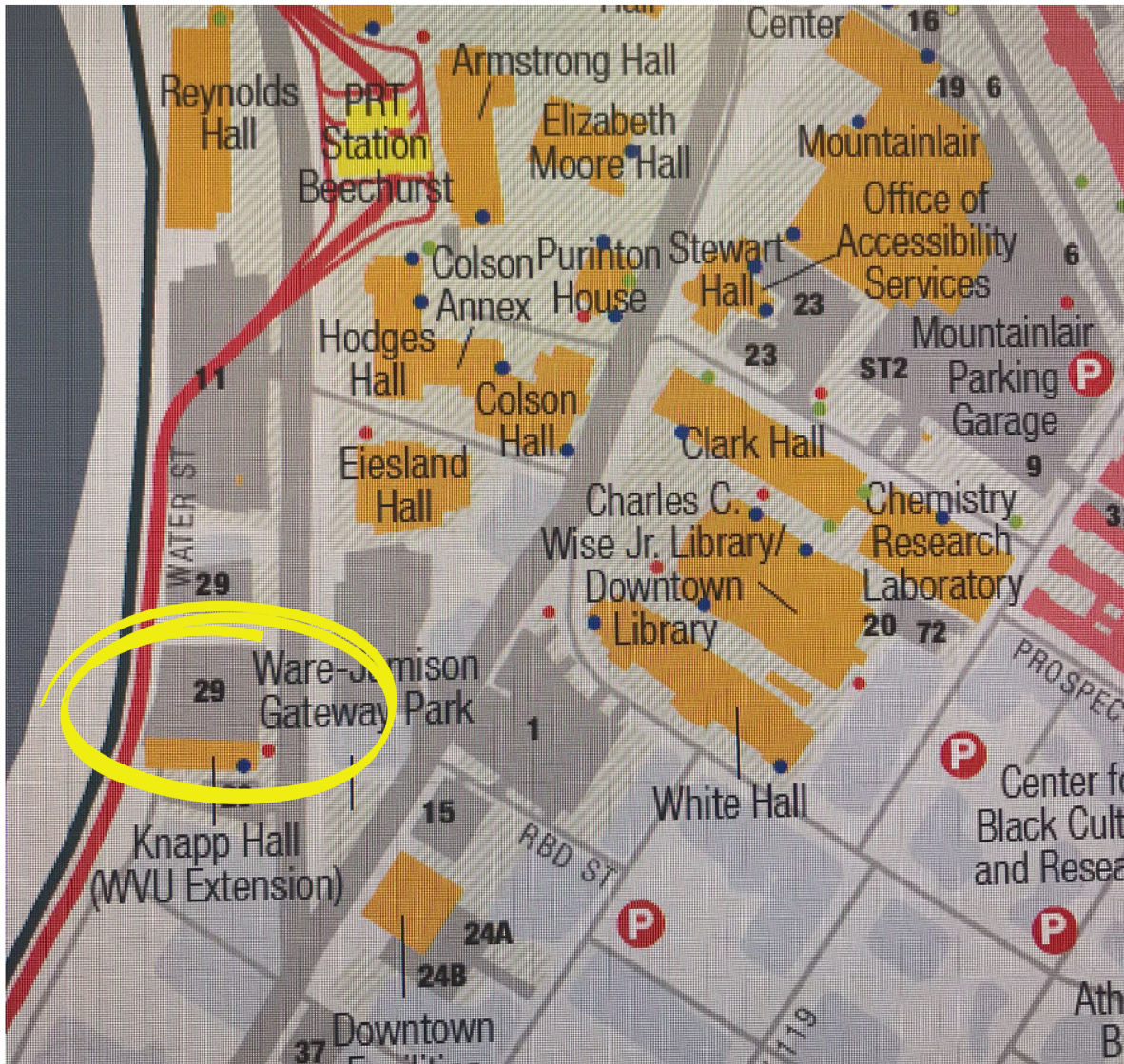
[Mountain Man Axe Throwing](#)  
[WVU Research Forest](#)  
 WVU Animal Science Farm  
 Sky Rock  
 Mon River Rail Trail  
[Cooper's Rock State Forest](#)  
 Sand Springs Campground  
 WV Botanic Garden  
 WVU Planetarium  
 The Arboreum  
 Caperton Trail  
[Cheat Lake](#)  
 Big Bear Lake  
 Hovatter's Wildlife Zoo

### Beauty and Grooming

Sharp as an Error Barber School  
 Morgantown Beauty College  
[Classic Cutz](#)  
 Ladies & Gents Salon and Barbershop  
 Mocha Salon  
 Toniques Trilogy Hair Salon  
 The Wax Bar

# Where's Knapp?

Knapp is located at our downtown campus on Beechurst Avenue. It is a short way down from Hodges Hall and the newly constructed business building, Reynolds. Many Social Work classes are held here. On the 1st floor is a study room, so feel free to stop by, study, and meet the Social Work Faculty!



# Accounts to Follow



WVU School of Social Work  
Facebook & Instagram



Undergraduate Social Work  
Organization Facebook and  
Instagram



SOCIALWORKWVU



USWOWVU

Follow WVU PRT on Twitter to stay up to date on PRT run times, delays, and cancellations by following the link below.



Follow WVU Safety on Twitter to stay up to date on safety alerts across campus in real time.

